

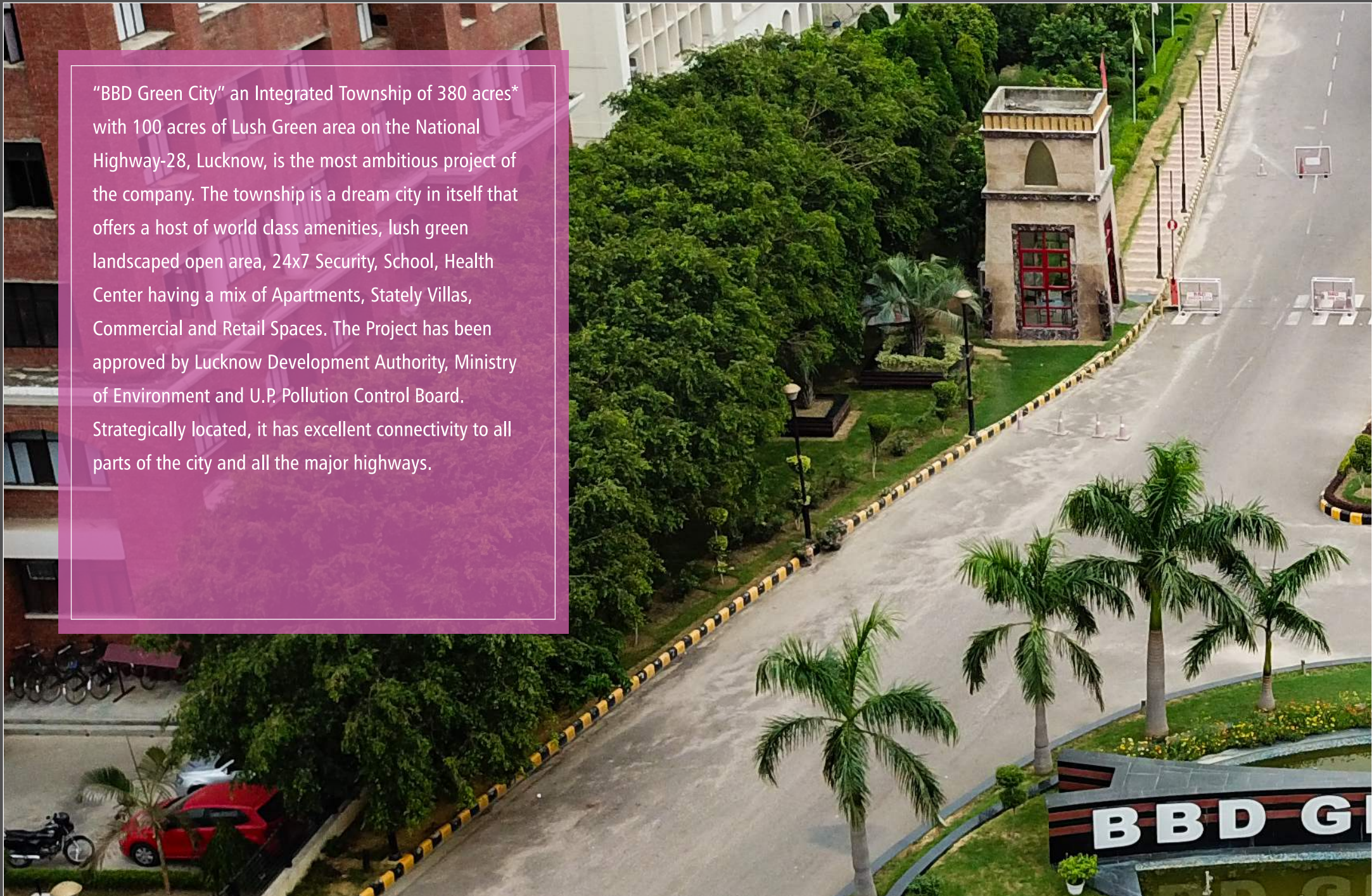
BBD
GREEN CITY

380 Acre* Township with
100 Acres of Lush Green Area

New Gomti Nagar, Faizabad Road Lucknow



"BBD Green City" an Integrated Township of 380 acres* with 100 acres of Lush Green area on the National Highway-28, Lucknow, is the most ambitious project of the company. The township is a dream city in itself that offers a host of world class amenities, lush green landscaped open area, 24x7 Security, School, Health Center having a mix of Apartments, Stately Villas, Commercial and Retail Spaces. The Project has been approved by Lucknow Development Authority, Ministry of Environment and U.P. Pollution Control Board. Strategically located, it has excellent connectivity to all parts of the city and all the major highways.



Grand Entrance



HIGHLIGHTS OF TOWNSHIP

HIGHLIGHTS OF TOWNSHIP

- Public Amenities
(Bank, ATM, Police Chawki)[#]
- Multi-tier Security
- High-end Shopping Mall
with Multiplex[#]
- 5 KM from High Court
- Educational Facilities[#]
- Recreational Facility[#]
- Hospital Facility[#]
- Ambulance Facility
- Metro Wholesale in Township
- International Standard Club[#]
- Internet Connectivity
Through Optical Fibre
- 24 hour Public Transport



In a world where everyone is talking about green and open spaces, here is a lifestyle that brings nature right into your home. Lotus Court is a vibrant yet peaceful multi-storied residential complex within the well-inhabited BBD Green City. Like its name, it is a beautifully designed and intelligently executed lifestyle that speaks volumes about luxury and plush living. With nature all around its well-ventilated homes and the sun warming every corner of its architecture, Lotus Court ensures a healthy living environment for your body and mind. Beautifully showcasing spacious 2BHK and 3BHK apartments, this grand lifestyle is surely the answer to all your long awaited desires.

A LIFESTYLE SO BREATHTAKING, YET SO WELL-PLANNED



Earthquake Resistant Structure



Multi-tier Security



Club With Swimming Pool & Gym



Fibre to the Home Infra



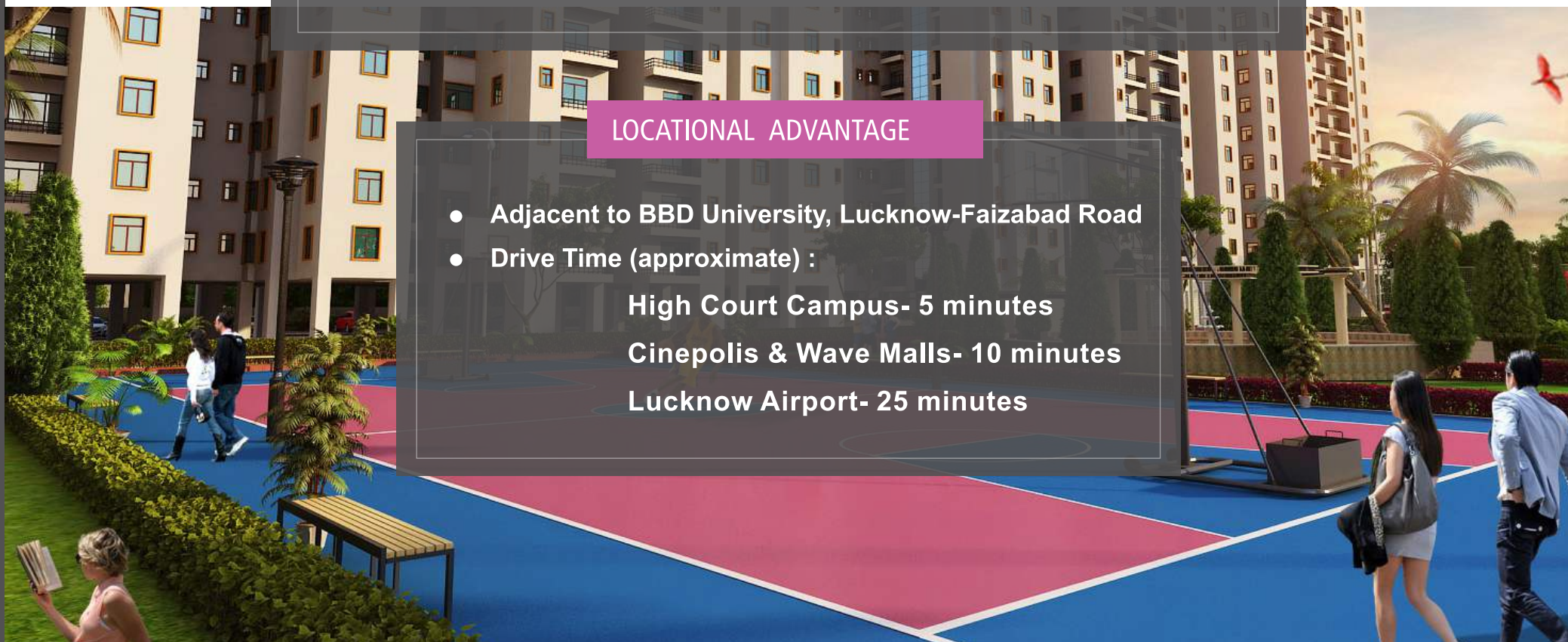
Kids Play Area & Jogging Track



Lush Green Area

LOCATIONAL ADVANTAGE

- Adjacent to BBD University, Lucknow-Faizabad Road
- Drive Time (approximate) :
High Court Campus- 5 minutes
Cinepolis & Wave Malls- 10 minutes
Lucknow Airport- 25 minutes



Site Layout Plan



Floor Plan (Phase-I)



2BHK TYPE -III
CARPET AREA = 589.00 SQ.FT.
SALEABLE AREA = 900.00 SQ.FT.



2BHK TYPE -II
CARPET AREA = 571.00 SQ.FT.
SALEABLE AREA = 900.00 SQ.FT.

2BHK TYPE -IV
CARPET AREA = 570.00 SQ.FT.
SALEABLE AREA = 900.00 SQ.FT.



2BHK TYPE -II
CARPET AREA = 571.00 SQ.FT.
SALEABLE AREA = 900.00 SQ.FT.

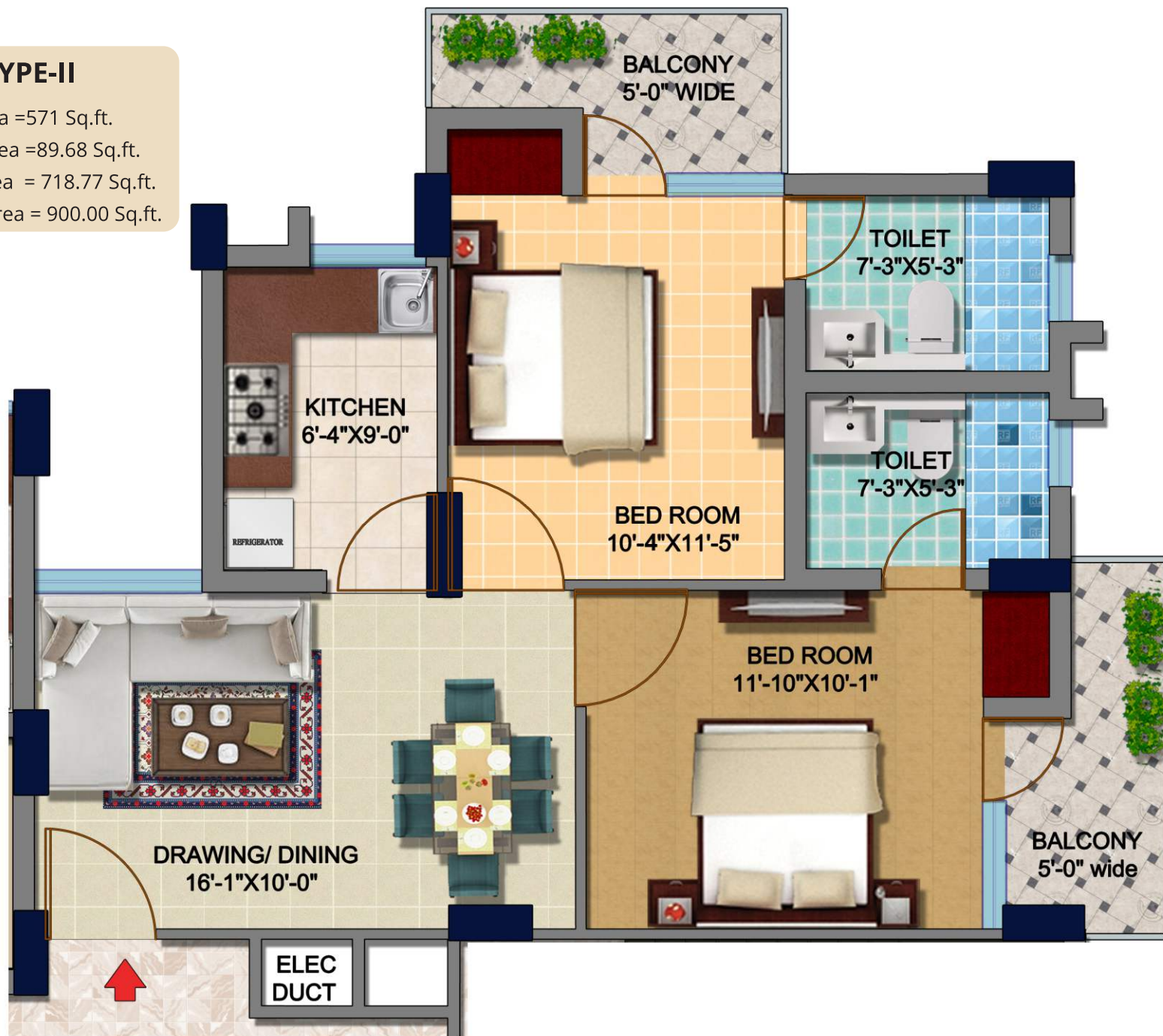
TYPE-II

Carpet Area = 571 Sq.ft.

Balcony Area = 89.68 Sq.ft.

Builtup Area = 718.77 Sq.ft.

Saleable Area = 900.00 Sq.ft.



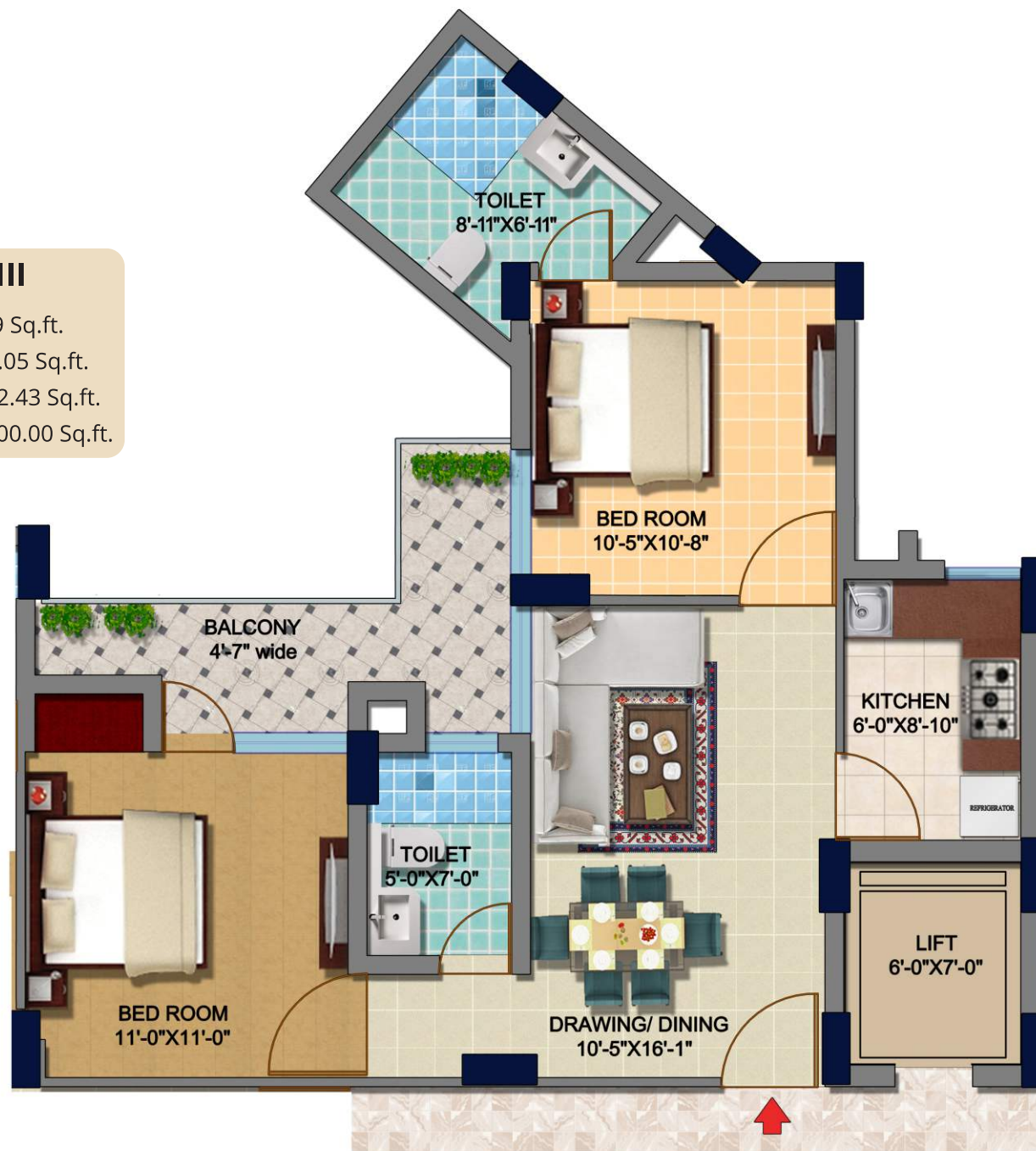
TYPE-III

Carpet Area = 589 Sq.ft.

Balcony Area = 87.05 Sq.ft.

Builtup Area = 722.43 Sq.ft.

Saleable Area = 900.00 Sq.ft.





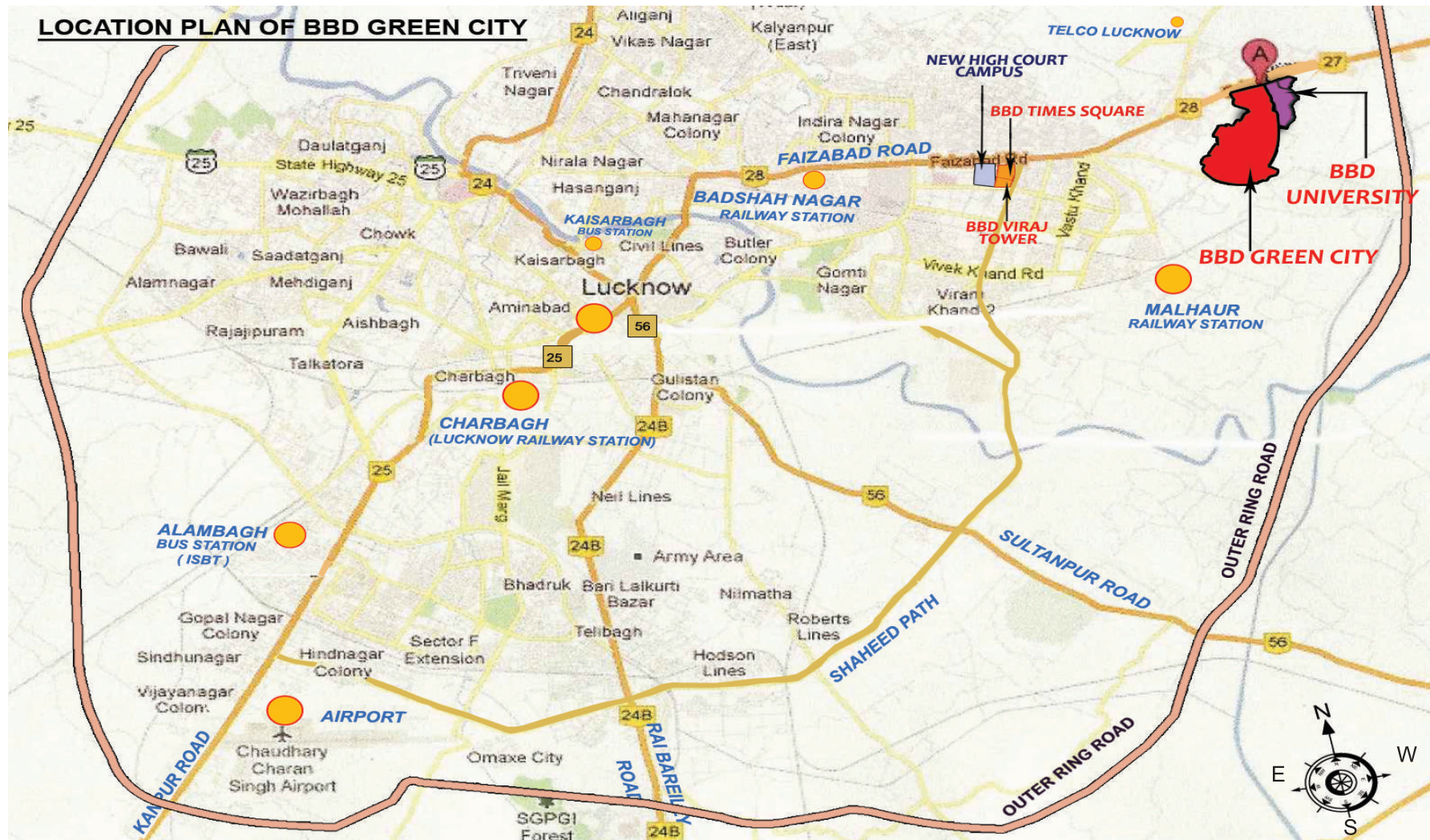
TYPE-IV

Carpet Area = 570 Sq.ft.
 Balcony Area = 89.74 Sq.ft.
 Builtup Area = 743.73 Sq.ft.
 Saleable Area = 900.00 Sq.ft.

LOCATION	FLOORING	DOORS & WINDOWS	FIXTURE & FITTINGS	WALL FINISHES	CEILING FINISHES
LIVING/DINING ROOM	Vitrified Tiles of Varmora, Sunheart, Orient Asian, Regent or equivalent.	Doors: Main door frame of Seasoned and treated Red Meranti wood . External flush door with HDF skin duly painted and good quality hardware Windows: Glazed Aluminium windows.	Light & fan points, AC Power point, Telephone Point and Cable TV Point.	Oil Bound Distemper of Asian, Berger, Nerolac or equivalent.	Oil Bound Distemper of Asian, Berger, Nerolac or equivalent.
MASTER BEDROOM	Vitrified Tiles of Varmora, Sunheart, Orient Asian, Regent or equivalent.	Doors: Door frame of Seasoned and treated Red Meranti wood . Skin moulded door shutter with HDF skin duly painted and good quality hardware Windows: Glazed Aluminium windows.	Light & fan points, AC Power point, Telephone Point and Cable TV Point.	Oil Bound Distemper of Asian, Berger, Nerolac or equivalent.	Oil Bound Distemper of Asian, Berger, Nerolac or equivalent.
BEDROOM	Vitrified Tiles of Varmora, Sunheart, Orient Asian, Regent or equivalent.	Doors: Door frame of Seasoned and treated Red Meranti wood . Skin moulded door shutter with HDF skin duly painted and good quality hardware Windows: Glazed Aluminium windows.	Light & fan points, AC Power point, Telephone Point and Cable TV Point.	Oil Bound Distemper of Asian, Berger, Nerolac or equivalent.	Oil Bound Distemper of Asian, Berger, Nerolac or equivalent.
TOILETS	Matt finish Ceramic Tiles of Varmora, Sunheart, Orient Asian, Regent or equivalent.	Doors: Door frame of Seasoned and treated Red Meranti wood . Skin molded door shutter with HDF skin duly painted and good quality hardware. Windows: Glazed Aluminum windows.	Exhaust Fan & Geyser point, standard quality chrome finish fittings and ceramic sanitary ware of Parryware, Hindware or equivalent.	Ceramic tiles up to 7 feet height, balance area finished in Oil Bound Distemper.	Oil Bound Distemper of Asian, Berger, Nerolac or equivalent.
KITCHEN	Matt finish Ceramic Tiles of Varmora, Sunheart, Orient Asian, Regent or equivalent.	Doors: Door frame of Seasoned and treated Red Meranti wood . Skin molded door shutter with HDF skin duly painted and good quality hardware. Windows: Glazed Aluminum windows.	Electrical: Provision for Fresh air Fan, water filter, electric chimney & Geyser point. C.P wares and Accessories: CP fittings and fixtures of Parryware, Hindware or equivalent and SS sink with drain board of Imagine or equivalent. Provision for fitting of geysers. Working Top Counter in granite or equivalent.	Ceramic tile up to two feet height above Kitchen Counter, balance area finished in Oil Bound Distemper.	Oil Bound Distemper of Asian, Berger, Nerolac or equivalent.
BALCONIES	Non-Skid Ceramic Tiles of Varmora, Sunheart, Orient Asian, Regent or equivalent.		Parapet in brickwork with MS Railing as per functional and elevational requirement.	Exterior grade paint finish of Asian, Nerolac, Berger or equivalent.	Oil Bound Distemper of Asian, Berger, Nerolac or equivalent.
LIFT LOBBY/CORRIDOR	Double Charged vitrified tiles of Asian, Somany, Regent, Sun heart, Varmora or equivalent		-	Tiles Sun heart, Asian, Somany, Regent or equivalent & Granite strip on Lift door wall. Balance area finished with Acrylic Emulsion paint of Asian, Nerolac or equivalent.	Oil Bound Distemper of Asian, Nerolac or equivalent.
ELECTRICAL WIRING & INSTALLATIONS	BIS certified Modular switches/sockets of MK, Asian, ABB, Anchor, Indoasian or equivalent. Distribution boxes and MCB's of Havells, ABB, Indoasian or equivalent. Internal wiring of flexible copper wires of HPL or equivalent in concealed conduits. . provision of telephone, wifi internet, cable TV and CCTV by optical fiber (FTTH)				
PLUMBING	BIS certified CPVC/UPVC water supply pipes with standard valves & accessories and PVC Waste and Soil pipes of Astral, Ashirwad, Supreme, Raksha or equivalent.				
LIFTS	One Wide car and one deep car as stretcher lift of Otis, Kone ThyssenKrupp, Schindler, Johnson or equivalent. Lift car to be powder coated and Granite stone flooring. The lift to have all latest safety provisions like ARD, full door sensors, PA system and fire rated doors.				

Disclaimer: The above specifications are indicative & may be changed in consultation with the Architect. The company reserves the right to provide equivalent finishes or fittings and fixtures.

LOCATION MAP



MAJOR LANDMARKS

- About 25 minutes drive from Lucknow Airport.
 - Congestion free traffic to all major locations.
 - Close proximity from Central Business district.
- 5 Minute Drive from New High Court Campus, Gomti Nagar, Lucknow.**

Ongoing Projects



THE AKHILESH DAS GUPTA SCHOOL



SUN BREEZ - II



LOTUS ENCLAVE



HOTEL SAGAR INTERNATIONAL



BBD TIMES SQUARE

Disclaimer- Images used are not actual but only artistic impressions.

Completed Projects



SUNBREEZE-I



BBD VIRAJ TOWERS



HOTEL FORTUNE PARK BBD BY ITC



BEST WESTERN SAGAR SONA



METRO WHOLESALE

With a proven track record of sustained growth, customer satisfaction and innovation, Viraj Constructions is a dynamic and innovative company with a vision to contribute to the building of a new Lucknow and become one of the most trusted names in the real estate industry.



Disclaimer: The contents may have errors or omissions including but not limited to technical inaccuracies and typographical errors.

*1 acre = 4046.86 sq.mt.



Viraj Constructions Pvt. Ltd. (An ISO 9001 :2015 (QMS), ISO 14001 :2015 (EMS), 18001 :2007 (OH&S) Certified Company) CIN : U45201UP2005PTC030895

Call: 9696333555, 9696112255, 05226659500 Email- sales@virajconstructions.co.in

Corporate office: BBD Viraj Towers, Vibhuti Khand, Shaheed Path, Gomti Nagar, Lucknow. **Site office:** BBD Green City, New Gomti Nagar, Faizabad Road, Lucknow.